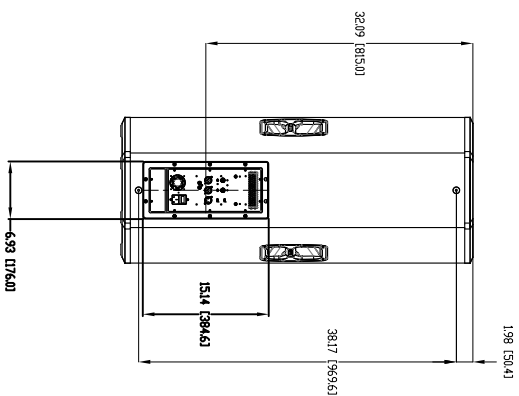
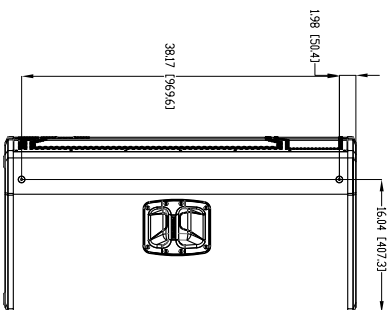
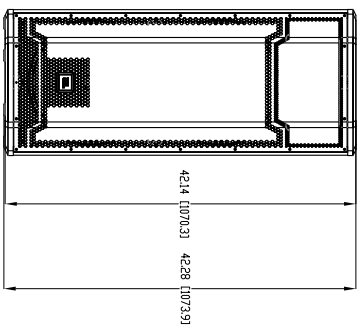
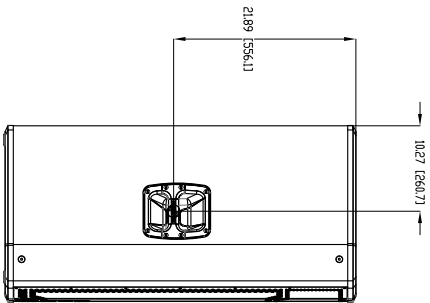
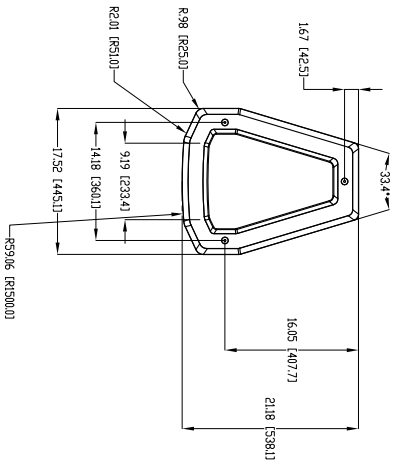


THIS DRAWING AND SPECIFICATION ARE THE PROPERTY OF JBL CORPORATION.
NOT BE LOANED, REPRODUCED, COPIED, OR IN ANY MANNER BE
USED FOR ANY PURPOSES WITHOUT WRITTEN PERMISSION.



A

B

C

D

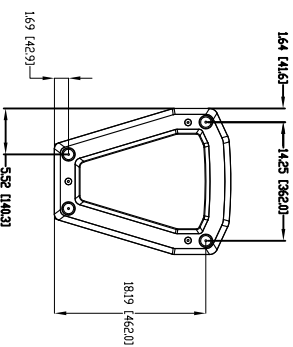
1

2

3

4

- NOTES: UNLESS OTHERWISE SPECIFIED
- COMPONENTS: LF 2X 275G, HF 1X 2408G
 - INPUT 2X XLR WITH LOCK THRU
 - GRILLE: 16 GA PERFORATED OGS POWDER COATED BLACK WITH CLOTH BACKING
 - MATERIALS: 18mm BIRCH FACED POPLAR
 - FINISH: BLACK DURELUX
 - SUSPENSION POINTS: 12X M10 THREADED SUSPENSION POINTS
 - PILE MOUNT: N/A
 - WEIGHT: 20 LBS (9.0 kg)
 - INDICATES CENTER OF GRAVITY



| REVISIONS | | DATE |
|-----------|-----------------------|-----------|
| LR | DESCRIPTION | |
| A | RELEASE FOR PROTOTYPE | 3/24/2014 |

| TOLERANCES | |
|--|--------|
| UNLESS OTHERWISE SPECIFIED | |
| XX ± .003 INCH | |
| XX ± .005 INCH | |
| ANGULAR TOLERANCE: 0° ± 50' | |
| DIMENSIONS ARE IN INCHES | |
| ALL DIMENSIONS ARE FINISHED DIMENSIONS | |
| DO NOT SCALE DRAWING | |
| JBL PROFESSIONAL | |
| A Harman International Company | |
| Hartford, CT 06183 USA | |
| CUSTOMER DRAWING, PRX725 | |
| SIZE | REV |
| A | A |
| SCALE | SHEET |
| NTS | 1 OF 1 |